

## Focus Groups



At our Focus sessions, we discuss topics such as *Coping with Stress*, *Relationships in Korea*, *Depression* and more.

Look out for times and dates. We will post it on the Woosong - Counseling Center website and send out an email with all the details. Snacks available!

## Our Counselors

Prof. Samuel Hong

Prof. Johan Reiners

[counselor@wsu.ac.kr](mailto:counselor@wsu.ac.kr)

<https://english.wsu.ac.kr/>

## Important Resources

### Daejeon Support Center for Foreigners

<https://dic.or.kr/en/main/>  
Facebook.com/Global.DIC

2<sup>nd</sup> Floor – Hana Bank Daejeon Yeokjeon Branch

### WITH U Culture Center

- Free Korean Classes
- Korean Culture Experiences
- Free Dental and Oriental Medical Treatment for Foreign Students  
3F. Seven Eleven Building,  
Dongdaejeon-ro 174-7, Dong-gu.  
Instagram: with\_u\_center.

## International Worship

- Saeronam Community Church-  
[http://www.saeronam.or.kr/home/en\\_home](http://www.saeronam.or.kr/home/en_home)
- Daeheung International Church  
Sundays – 11:00 (near Seodaejeon Station)  
<https://daeheung-international-church4.wordpress.com/>
- Roman Catholic Church - English Mass  
[moyse.djcaritas.or.kr/ab-1573](http://moyse.djcaritas.or.kr/ab-1573)  
Catholic Caritas 2F or B1,
- Islamic Center - Daejeon Masjid -  
193, Daehak-ro, Yuseong-gu,  
<https://www.facebook.com/p/Korea-Islamic-Center-of-Daejeon-ICD-Masjid-100067584667866/>

<https://english.wsu.ac.kr/>

# International Student Counseling Center



**ENDICOTT**  
**COLLEGE**  
OF INTERNATIONAL STUDIES



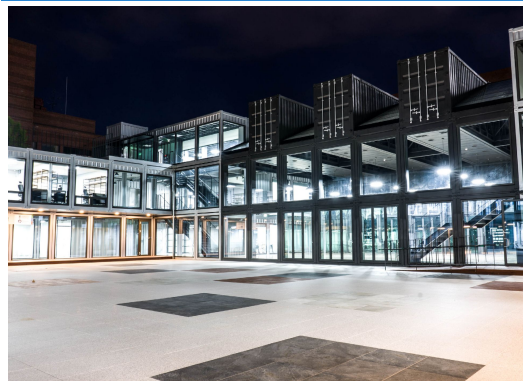
## About us

Throughout your university experience, you, as a student at Woosong University, will develop independence by navigating stressful, challenging, and even overwhelming emotional adversity. You will have to deal with normal stressors, such as trying to find your way through the maze of the academic forest while also riding the rollercoaster of adjusting to a new culture and way of doing things. ECIS Counseling Center is there to participate in your journey in the following ways:

W10, Room 316-3

- To assist you in your pursuit of personal and academic growth.
- To help you gain a better understanding and appreciation of yourself.
- To support you as you make important decisions about your life and future.
- To provide counseling support to you individually and in groups.

The Counseling Center is committed to creating a safe, non-judgmental, and affirming environment based on the values of multicultural, and inclusive practices.



W10, Room 316-3

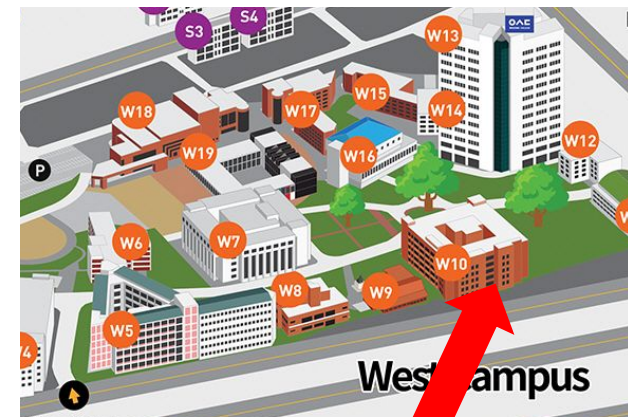
## Services

- One-on-one counseling
  - Group counseling
    - Focus Groups
- Workshops on Mental Health

## How to Make an Appointment

Visit the Woosong homepage at <https://english.wsu.ac.kr/main/index.jsp>. Go to **Current Students** and click on **Counseling Center**. Click on **Schedule a Confidential Appointment** and select a date and time for your appointment.

## Where to Go?



W10, Room 316-3